



**HIDROMAG**™  
magazinul de hidraulică

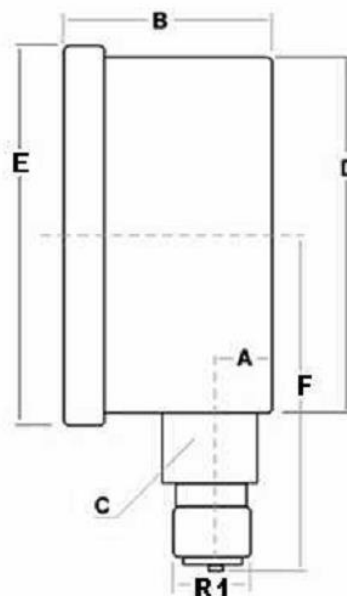
## MANOMETRE

pag.2-6

## DEBITMETRE

pag.7-8

## MANOMETRE VERTICALE DN 63 CU GLICERINA (1/4 BSP)



### CARACTERISTICI:

**CLASA:** 1,6%

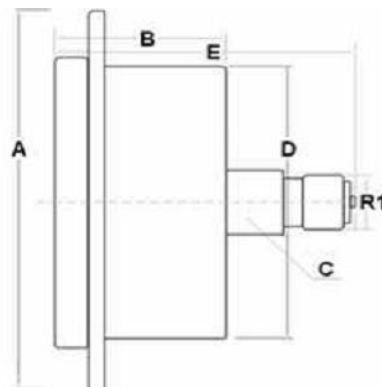
**TEMPERATURA DE LUCRU:** -10°C +60°C

### DIMENSIUNI:

A	B	C	D	E	F	R1
10	29	14	62	68	57	¼"

COD	DOMENIU	COD	DOMENIU
MFI6304001V	0-1	MFI6304060V	0-60
MFI63042.5V	0-2.5	MFI6304100V	0-100
MFI6304004V	0-4	MFI6304160V	0-160
MFI6304006V	0-6	MFI6304250V	0-250
MFI6304010V	0-10	MFI6304315V	0-315
MFI6304012V	0-12	MFI6304400V	0-400
MFI630416V	0-16	MFI6304600V	0-600
MFI6304020V	0-20		
MFI6304025V	0-25		
MFI6304040V	0-40		

## MANOMETRE AXIALE DN 63 CU GLICERINA (1/4 BSP)



### CARACTERISTICI:

**CLASA:** 1,6%

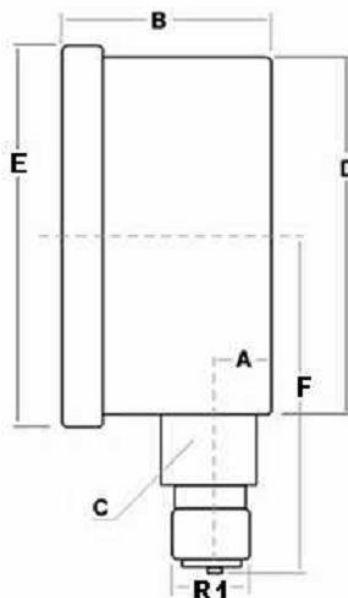
**TEMPERATURA DE LUCRU:** -10°C +60°C

### DIMENSIUNI:

A	B	C	D	E	R1
83	29	14	62	53	¼"

COD	DOMENIU	COD	DOMENIU
MFI6304001-DB	0-1	MFI6304060-DB	0-60
MFI63042.5-DB	0-2.5	MFI6304100-DB	0-100
MFI6304004-DB	0-4	MFI6304160-DB	0-160
MFI6304006-DB	0-6	MFI6304250-DB	0-250
MFI6304010-DB	0-10	MFI6304315-DB	0-315
MFI6304012-DB	0-12	MFI6304400DB	0-400
MFI630416-DB	0-16	MFI6304600DB	0-600
MFI6304020-DB	0-20		
MFI6304025-DB	0-25		
MFI6304040-DB	0-40		

## MANOMETRE VERTICALE DN 100 CU GLICERINA (1/2 BSP)



### CARACTERISTICI:

**CLASA:** 1,6%

**TEMPERATURA DE LUCRU:** -10°C +60°C

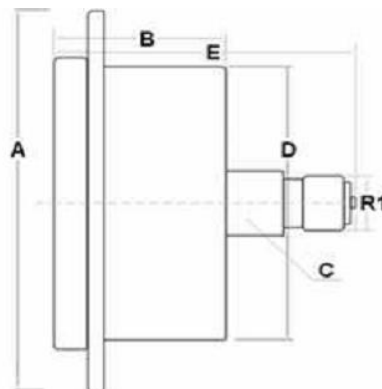
### DIMENSIUNI:

A	B	C	D	E	F	R1
10	38	22	98.5	110	82	1/2"

### TEMPERATURA DE LUCRU: -10°C +60°C

COD	DOMENIU	COD	DOMENIU
MFI10008001V	0-1	MFI10008060V	0-60
MFI1000802.5V	0-2.5	MFI10008100V	0-100
MFI10008004V	0-4	MFI10008160V	0-160
MFI10008006V	0-6	MFI10008250V	0-250
MFI10008010V	0-10	MFI10008315V	0-315
MFI10008012V	0-12	MFI10008400V	0-400
MFI10008016V	0-16	MFI10008600V	0-600
MFI10008020V	0-20		
MFI10008025V	0-25		
MFI10008040V	0-40		

## MANOMETRE AXIALE DN 100 CU GLICERINA (1/2 BSP)



### CARACTERISTICI:

**CLASA:** 1,6%

**TEMPERATURA DE LUCRU:** -10°C +60°C

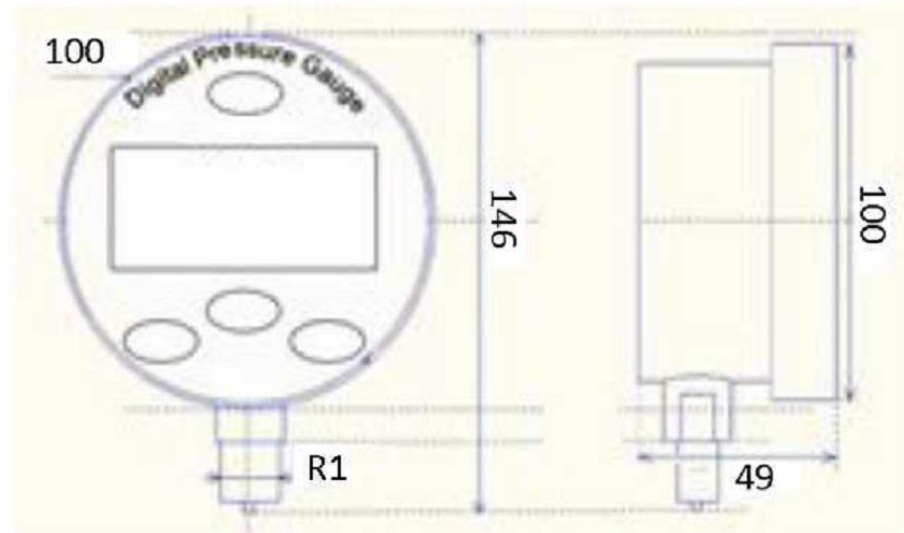
### DIMENSIUNI:

A	B	C	D	E	R1
128	39	22	98.5	82	1/2"

### TEMPERATURA DE LUCRU: -10°C +60°C

COD	DOMENIU	COD	DOMENIU
MFI10008001-DB	0-1	MFI10008060-DB	0-60
MFI1000802.5-DB	0-2.5	MFI10008100-DB	0-100
MFI10008004-DB	0-4	MFI10008160-DB	0-160
MFI10008006-DB	0-6	MFI10008250-DB	0-250
MFI10008010-DB	0-10	MFI10008315-DB	0-315
MFI10008012-DB	0-12	MFI10008400-DB	0-400
MFI10008016-DB	0-16	MFI10008600-DB	0-600
MFI10008020-DB	0-20		
MFI10008025-DB	0-25		
MFI10008040-DB	0-40		

## MANOMETRU DIGITAL DN100 VERTICAL (1/2 BSP)



CARCASA DIN INOX

SCALA IN: kPa, MPa, kgf/cm<sup>2</sup>, psi, bar

PRECIZIA: +/-0.5%

COD	SCAL(bar)
MANDIG100V	0-1000



## DEBITMETRE 2-120 L/MIN 400 BAR



FILET INTRARE- IESIRE

3/4" BSP

FILET CONECTARE MANOMETRU

1/4" BSP

TEMPERATURA AMBIENT

-10+50°C

TEMPERATURA FLUIDULUI

continuu: 20-80°C

Intermitent: (<10 minute) 110°C

MATERIAL

Corp: Aluminiu

2011T3

Parti interne: Bronz

Garnituri: FKM

Cod	Domeniu (l/min)	Pres.max. (bar)	Dimensiuni
FT5758-01	2-30	420	146X74X49 mm
FT5758-02	2-60	420	146X74X49 mm
FT5758-03	4-120	420	146X74X49 mm

## DEBITMETRE 250 bar :

0-56 L/MIN 250 BAR TIP3-PORTURI ½'

0-150 L/MIN 250 BAR TIP4-PORTURI 1'

0-550 L/MIN 250 BAR TIP5-PORTURI 1 1/2'



Cod	Presiune de lucru(bar)	Domeniu(l/min)
WPB3A6HT15	250	0-56
WPB4A6HV40	250	0-150
WPB5A6HY90	250	0-550

Temperatura maxima de lucru: 115°C